

Bilborough

Area Committee Executive Summary

Unofficial July 2013 Data

Ward Priorities

Theme	Priorities	Key Actions	Outcome	Lead
<p>Safer</p>	<p>ASB reduction Anti-Social Behaviour as it develops</p>	<p>1. FCT will work with partners via the established Bilborough network to increase provision of diversionary activities across the ward</p> <p>Police Interact with the community to identify key ASB issues and areas through meetings, revisits, briefings and Alert system feedback. Through this offenders can be identified and enforcement can be carried out. Positive proactive Policing to identify offenders and hotspot areas in order to deter continued behaviour. High visibility patrols at key times by Officers and PCSOs. Working in partnership with other agencies to assist in engagement and enforcement activities.</p> <p>Community Protection Community Protection Officers to patrol at key times with Police colleagues and to deliver initial warnings to those committing the ASB (and / or their families). Liaise with the Police to provide CCTV evidence for intelligence and enforcement. Take formal warning and enforcement action as necessary.</p>	<p>1. An increased activity timetable of partnership events.</p> <p>Reduction in ASB</p> <p>Increasing trust and confidence with the Community Feed back from NPT's show residents are concerned about ASB.120 completed. Review of Police Systems didn't show any issues that police not already involved in with partners. 'Locations' not mentioned in surveys. -</p>	<p><u>FCT</u></p> <p><u>Police</u></p>

	<p>Anti-Social Behaviour around Birchover Community Centre</p> <p>Reduction in Fires in home.</p>	<p>'Helping Hands Project' in schools</p> <p>To advise tenants and deliver warnings as necessary and to liaise with Police and CP to carry out enforcement actions. Specifically for Birchover, closer liaising with Community Centre staff and volunteers, licensing and other agencies.</p> <p>To approach local schools to deliver Riskwatch Fire and Burns Programme.</p>	<p>5 schools took part, in assemblies about ASB</p> <p>Promotes good neighbour conduct Reduction in ASB</p> <p>To increase fire safety awareness within the home and to reduce dwelling fires.</p>	<p><u>Police</u></p> <p><u>NCH</u></p> <p><u>Police</u></p> <p><u>Fire Service</u></p>
Neighbourhoods	<p>Improve appearance of Neighbourhood s/gardens/hedges</p> <p>The Neighbourhood to be as clean as the City centre</p> <p>Reduce dog fouling within the ward</p> <p>Transformation meetings</p>	<p>Complete Health and Safety Inspections and continue to carry out estate inspections to identify breached of tenancy and ensure estate continues 3 stars aim for 4 Stars</p> <p>Cranwell Clean Up Day</p> <p>'Keep Bilborough Clean' on Bilborough Market.</p> <p>Build on relationship with NUSA and local schools to involve students in promoting responsible dog ownership.</p> <p>Partners to resolve long term/ongoing issues</p>	<p>To maintain 3 stars and strive for 4</p> <p>Improved appearance, reduction in rubbish, increased community pride</p> <p>Increase awareness of reporting Dog Fouling, dog tagging, recycling.</p> <p>CPO's in area everyday.</p>	<p><u>NCH</u></p> <p><u>Partners</u></p> <p><u>Councillor & Partners</u></p> <p><u>City Services/Jane Ludlow</u></p> <p><u>NDO & Partners</u></p>

Families	<p>More activities for young people Welfare Reform Awareness Welfare Reform Awareness Improving Adult Literacy</p>	<p>FCT will work with partners via the established Bilborough network to increase provision of diversionary activities across the ward FCT can provide advice and guidance and offer support on debt management. NCH rents team and welfare benefits appointments available at Aspley Housing Office. Ensure all NAT partners have access to available training. West 8 Partnership to coordinate with partners who provide literacy activities for adults.</p>	<p>1. An increased activity timetable of partnership events, especially during Summer holidays.</p> <p>Case studies evidence a self assessed improvement in money management/understanding of benefit entitlement.</p>	<p><u>FCT</u></p> <p><u>NCH</u></p> <p><u>West 8 Partnership</u></p>
Health	<p>Raising awareness of health</p> <p>Improve access to health related services in Bilborough</p>	<p>1. FCT work in partnership with health to provide services within the Childrens Centres or can support access to services. Health Awareness Day at Birchover Community Centre (July'13) 2. FCT activities for children, young people and their parents/carers include health messages and healthy refreshments. 3. FCT provides cook and eat sessions for parents/carers and their children. Promote local health services through the North Locality joint resource with Ridewise Partners to refer and promote health improvement services</p>	<p>1. Softsmart monitoring demonstrates increase uptake. 2. Case studies demonstrate self assessment of better understanding of health and importance of prevention Increase awareness & promote further sessions 1. Session planning will evidence delivery of health messages and services. 2. Softsmart monitoring demonstrates good uptake. Joint resource currently being worked on . Postcode/referral data currently being sought being sought to establish a baseline and targets to work towards. Meeting being arranged to promote DOBH to partners.</p>	<p>FCT</p> <p>DOBH/Travel Right DOBH/Partners : FCT/ NCH/ Vol & Com Grps.</p>

	<p>Increase engagement & consultation re health issues</p> <p>Identify health needs of older people, including long term conditions</p>	<p>Increase no of Change Maker Vols</p> <p>Partners to support engagement & consultation opportunities with local community.</p> <p>Gather Bilborough health stats.</p> <p>Consult older residents & partners on health needs.</p> <p>NCH's Healthy Living Team supporting older people</p>	<p>Target to increase no of Bil Ward vols to 5 between Jan-Mar '13.</p> <p>Currently liaising with NHS data team</p> <p>Being planned by HPO for North Locality while recruiting vols in Bilborough.</p>	<p>DOBH/ Partners/Neighbourhood Teams</p> <p>DOBH</p> <p>NCH</p>
Working	<p>Raising educational attainment</p> <p>Working Links</p> <p>Increase numbers of local volunteers</p> <p>Promote NCH 'Tenant Academy' for training and involvement opportunities</p>	<p>1. FCT will develop with partners a campus approach to adult learning on the Glenbrook/Children's Centre site to provide a pathway to education, training and employment.</p> <p>NCH to Promote 'working links.co.uk' as discussed in NAT.</p> <p>DOBH/Community Centres etc to promote volunteering as a way of gaining skills to access work.</p> <p>Bilborough residents are aware of and can access training courses through the Tenant Academy that will improve skills and competences to work on community projects and increase employability.</p>	<p>1. The parents/carers of the children who regularly receive books from the Dolly Parton Foundation are supported in their literacy needs to be able to enjoy reading with their children.</p> <p>2. Parents/carers who access the learning opportunities also access other FCT support and activities – increase reach figures.</p> <p>NCH tenants take up courses with Tenant Academy</p>	<p><u>FCT</u></p> <p><u>NCH</u></p> <p><u>NAT Partners</u></p>

Community Engagement

Ward Walks

Area/Estate	Date/Time	Meeting Point
The Vale Estate	23 rd July 10-12	The Vale Community Centre

Community Meetings

Group	Date	Venue
The Vale Management Committee Meetings	16. 05.13, 20. 06. 13,& 18. 07.13	The Vale Community Centre
Birchover Management Committee Meetings & AGM	08.05.13, 19.06.13, & 10.07.13	Birchover Community Centre
DADTRA	13.05.13, 10.06.13, & 08.07.13	Denewood Crescent
Beechdale Management Committee Meetings	23.04.13, 17.06.13, 15.07.13	Beechdale Community Centre
Sheila Russell Management Committee Meetings	08.04.13, 05.06.13	Sheila Russell Community Centre
NCH Consultation/Cranwell	17.07.13	Strelley Social Club

Community Engagement

Events Delivered

Event	Lead Partners	Date/Time	Venue
Birchover Open Day	Birchover Social Club	06.05.13	Birchover CC & SC
Bilborough Variety Club	SupportNet	21.05.13	Bilborough Library
Cranwell Clean Up	NCC, NCH & Police	23.05.13	Cranwell Estate
Family Fun Day	Hospice	22.06.13	Birchover CC & SC
The Vale Summer Fair	Vale Management Committee	13.07.13	Vale Com Centre
Bilborough Clean Up	Cllrs, NCC Officers	18.07.13	Bilborough Market
Health Awareness Day	Birchover vols, NDO & CFT	30.07.13	Birchover CC& Park

Future Events and Activities Planned

Event	Lead Partners	Date/Time	Venue
Summer activities for children & YP. Reading, Knitting, Sport, Play etc.	CFT, West Area Partnership,	Throughout Summer Holidays	Various in Bilborough, Libraries
Funday	Strelley Village Green Society	10.08.13	Strelley Green

Finance

Ward Councillor Budgets

Total Amount allocated this period £1.500

Budget Remaining Unallocated £ 159.933

Area Capital Fund

Total Amount allocated this period £163.867

Budget Remaining Unallocated £159.303 (inc of 2012-13 allocation)

Others – Section 106, NCH Environmentals, Other Funding

None this period

Ward Summary

Ward Performance Snapshot

Bilborough						
Area	Jul-13 Volume	Jul-12 Volume	Direction of Travel	YTD 13/14 Volume	YTD 12/13 Volume	Direction of Travel
Crime	110	113	↓	448	456	↓
ASB	101	66	↑	295	316	↓
DV	15	18	↓	62	67	↓
Area	Jun-13 Volume/ Score	Jun-12 Volume/ Score	Direction of Travel	YTD 13/14 Volume/ Average Score	YTD 12/13 Volume/ Average Score	Direction of Travel
Cleanliness	85	81	↑	259	254	↑
Graffiti	24	9	↑	45	24	↑
Fly tipping	23	14	↑	75	41	↑
Deliberate Fires	2	1	↑	5	11	↓

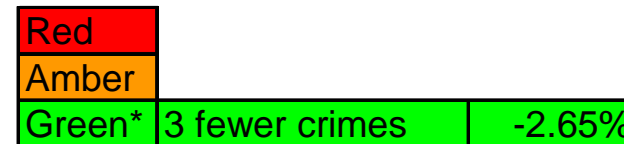
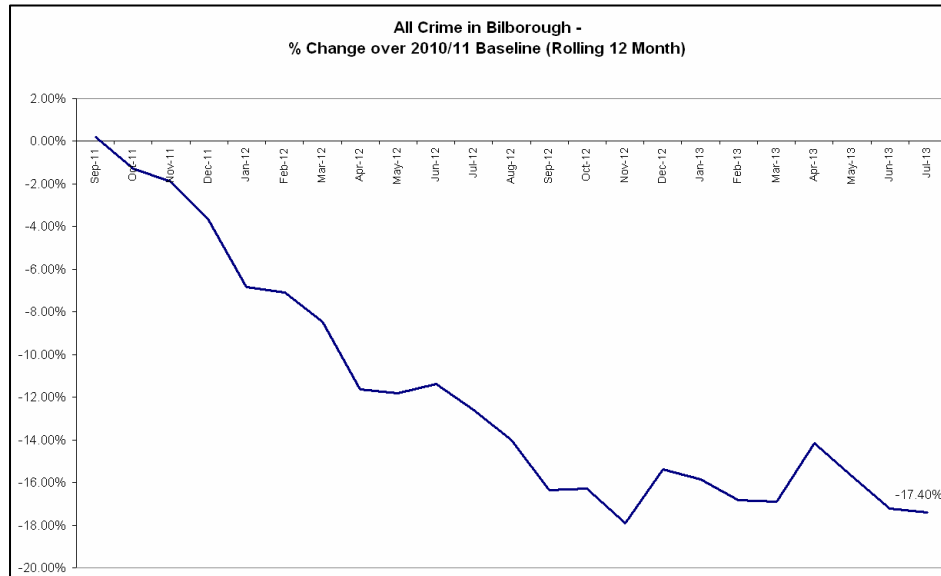
Key

↑	Most recent data shows an increase compared to the corresponding period last year.
↓	Most recent data shows a reduction compared to the corresponding period last year.
↔	Most recent data shows no change compared to the corresponding period last year.

Ward NAT Details

Bilborough Ward				
NAT meetings				
Date	Time	Venue	NAT members (TORs i.e Nom, Ndo, CP Team Leader etc.)	
			Name of Officer	Email Address
June 13th	9.30-10.30	Strelley Housing Office	Sgt Gary Bulmer	gary.bulmer@nottinghamshire.pnn.police.uk
July 11th	9.30-10.30	Strelley Housing Office	NOM Jane Ludlow	jane.ludlow@nottinghamcity.gov.uk
Aug 15th	9.30-10.30	Strelley Housing Office	CPO Team Leader	william.davies6849@nottinghamshire.pnn.police.uk
Sept 12th	9.30-10.30	Strelley Housing Office	NDO Julianne Christou	julianne.christou@nottinghamcity.gov.uk
Oct 10th	9.30-10.30	Strelley Housing Office	FCT Lisa Ash	lisa.ash@nottinghamcity.gov.uk
Oct 31st	9.30-10.30	Strelley Housing Office	Youth & Play Coordinator	gavin.alexander@nottinghamcity.gov.uk
Dec 5th	9.30-10.30	Strelley Housing Office	Cllrs Smith, Watson, Wood	wendy.smith@nottinghamcity.gov.uk
				marcia.watson@nottinghamcity.gov.uk
				malcolm.wood@nottinghamcity.gov.uk

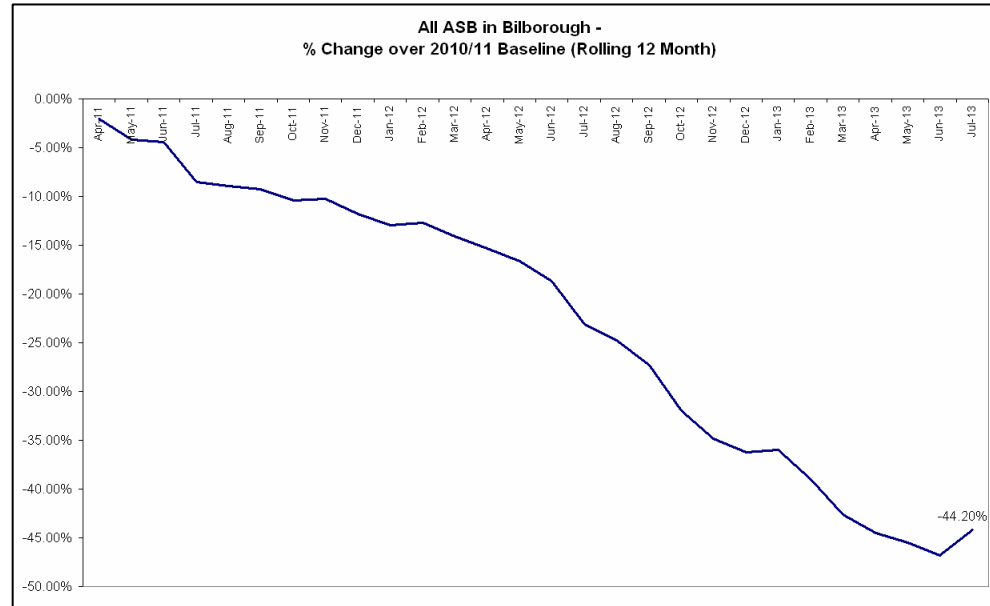
Crime



*Refers to July 2013 compared to July 2012

- The above baseline graph compares the *rolling* 12 month total of crime in Bilborough to a *fixed* 12 month 2010/11 baseline. The current 12 month total is showing a reduction of -17.40% against the baseline.
- In July 2013 there were 110 crimes which is a reduction of 2.65% (3 crimes, see above RAG rating) compared to July 2012. The Division as a whole experienced an increase in all crime of *approximately* 4.5%.
- Year to date crime in the ward has reduced by 1.75% (8 crimes, April – July 2013 compared to April – July 2012, see Table 1 of page 5). In the Division as a whole, all crime is up by *approximately* 5.6%.
- The largest volume increase this month was in Theft, which was up 15 crimes (see Table 1 of page 5).
- Crimes with a domestic flag assigned to them have reduced by 3 (July 2013 compared to July 2012, see Table 2 of page 5). For July 2013 the ward ranked 4th for this type of crime out of the 20 wards in the Division.
- The rate (per 1000 of population) of all crime in Bilborough is better than the average rate for the 20 wards (figures are year to date, see Table 3 of page 6).

All ASB



Red*	35 incidents	53.03%
Amber		
Green		

*Refers to July 2013 compared to July 2012

- The above baseline graph compares the *rolling* 12 month total of ASB in Bilborough to a *fixed* 12 month 2010/11 baseline. Performance on this measure is currently showing a reduction of 44.2%
- In July 2013 there were 101 ASB calls in the ward. This is an increase of 53.03% (35 calls, see above right RAG rating) compared to July 2012. The Division as a whole experienced an increase of *approximately* 26% on this measure.
- Year to date ASB in the ward has reduced by 6.65% (21 calls, April – July 2013 compared to April – July 2012, see Table 5 of page 7). In the Division as a whole, ASB is down by *approximately* 13.7%.
- The rate (per 1000 of population) of ASB in Bilborough is worse than the average rate for the 20 wards (July 2013 figures, see Table 4 of page 7).

Crime Figures

Table 1: Crime Types by Month and Year to Date

Type	Jul-12	Jul-13	Change	% Change	Prev YTD	YTD	Change	% Change
Autocrime	1	12	11	1100.00%	30	47	17	56.67%
Burglary	13	8	-5	-38.46%	58	40	-18	-31.03%
Burglary Other	7	3	-4	-57.14%	33	25	-8	-24.24%
Damage	25	17	-8	-32.00%	85	79	-6	-7.06%
Drugs	9	7	-2	-22.22%	29	28	-1	-3.45%
Fraud	0	1	1	#DIV/0!	3	2	-1	-33.33%
Other	5	2	-3	-60.00%	19	8	-11	-57.89%
Personal Robbery	3	2	-1	-33.33%	7	7	0	0.00%
Robbery Business	0	0	0	#DIV/0!	0	0	0	#DIV/0!
Sexual	0	2	2	#DIV/0!	1	13	12	1200.00%
Theft	14	29	15	107.14%	64	77	13	20.31%
Theft from Person	0	1	1	#DIV/0!	4	1	-3	-75.00%
Threats	7	3	-4	-57.14%	21	18	-3	-14.29%
Violence	29	23	-6	-20.69%	102	103	1	0.98%
Grand Total	113	110	-3	-2.65%	456	448	-8	-1.75%

Table 2: Crimes with a Domestic Flag Assigned to them by Month

Ward	Jul-12	Aug-12	Sep-12	Oct-12	Nov-12	Dec-12	Jan-13	Feb-13	Mar-13	Apr-13	May-13	Jun-13	Jul-13	Ward Rank (Jul-13)
BILBOROUGH	18	14	12	15	11	20	6	14	20	16	21	10	15	4

Crime Figures

Table 3: Crime Types by Rate (per 1000 of population) of the 20 Wards – Figures are Year to Date 2013/14

WARD	ALL CRIME	AUTOCRIME	BURGLARY	DAMAGE	PERSONAL ROBBERY	THEFT	THEFT FROM PERSON	VIOLENCE
ARBORETUM	45.22	3.14	5.02	5.29	2.96	8.25	0.81	8.79
ASPLEY	30.81	2.38	2.27	4.82	0.40	4.60	0.23	8.97
BASFORD	22.83	2.59	1.91	3.95	0.37	4.32	0.19	5.43
BERRIDGE	29.54	3.22	2.95	4.24	0.32	7.45	0.75	5.79
BESTWOOD	21.97	1.43	1.85	4.95	0.60	2.92	0.12	5.85
BILBOROUGH	26.68	2.80	2.38	4.70	0.42	4.59	0.06	6.13
BRIDGE	30.45	1.64	1.23	3.18	0.21	12.92	0.72	5.95
BULWELL	37.75	2.54	1.73	7.06	0.80	9.84	0.37	7.98
BULWELL FOREST	24.46	1.62	1.54	4.19	0.88	7.35	0.22	4.41
CLIFTON NORTH	19.71	1.94	1.71	4.03	0.54	3.18	0.08	4.27
CLIFTON SOUTH	18.36	1.00	2.01	3.08	0.22	3.73	0.07	5.52
DALES	26.67	1.94	1.40	5.29	0.24	6.44	0.61	5.29
DUNKIRK & LENTON	32.60	6.14	4.21	3.66	0.46	8.15	0.55	3.75
LEEN VALLEY	26.26	1.12	2.43	5.14	0.75	6.17	0.37	5.14
MAPPERLEY	26.25	2.65	1.96	3.98	0.25	5.24	0.06	4.86
RADFORD & PARK	28.88	3.57	3.37	2.55	0.92	8.52	0.56	4.03
SHERWOOD	30.69	2.53	2.40	2.92	1.04	11.42	0.13	5.64
ST ANNS	31.29	2.65	1.72	6.01	2.15	3.15	0.57	8.30
WOLLATON EAST & LENTON ABBEY	16.38	1.31	1.81	1.71	0.00	5.73	0.20	2.11
WOLLATON WEST	15.13	1.97	1.97	1.83	0.00	4.34	0.34	1.70
WARD AVERAGE	27.10	2.41	2.29	4.13	0.68	6.42	0.35	5.50

	Highest Rate
	Second Highest Rate
	Third Highest Rate

All ASB Figures

Table 4: All ASB by Rate (per 1000 of population) of the 20 Wards (Figures are June 2013)

WARD	RATE (PER 1000 OF POP.) July 2013
ARBORETUM	7.72
ASPLEY	6.19
BASFORD	5.24
BERRIDGE	6.59
BESTWOOD	5.97
BILBOROUGH	6.01
BRIDGE	7.69
BULWELL	8.42
BULWELL FOREST	4.19
CLIFTON NORTH	4.27
CLIFTON SOUTH	5.74
DALES	5.95
DUNKIRK & LENTON	2.84
LEEN VALLEY	3.46
MAPPERLEY	4.48
RADFORD & PARK	5.05
SHERWOOD	4.41
ST ANNS	8.09
WOLLATON EAST & LENTON ABBEY	1.61
WOLLATON WEST	1.63
WARD AVERAGE	5.47

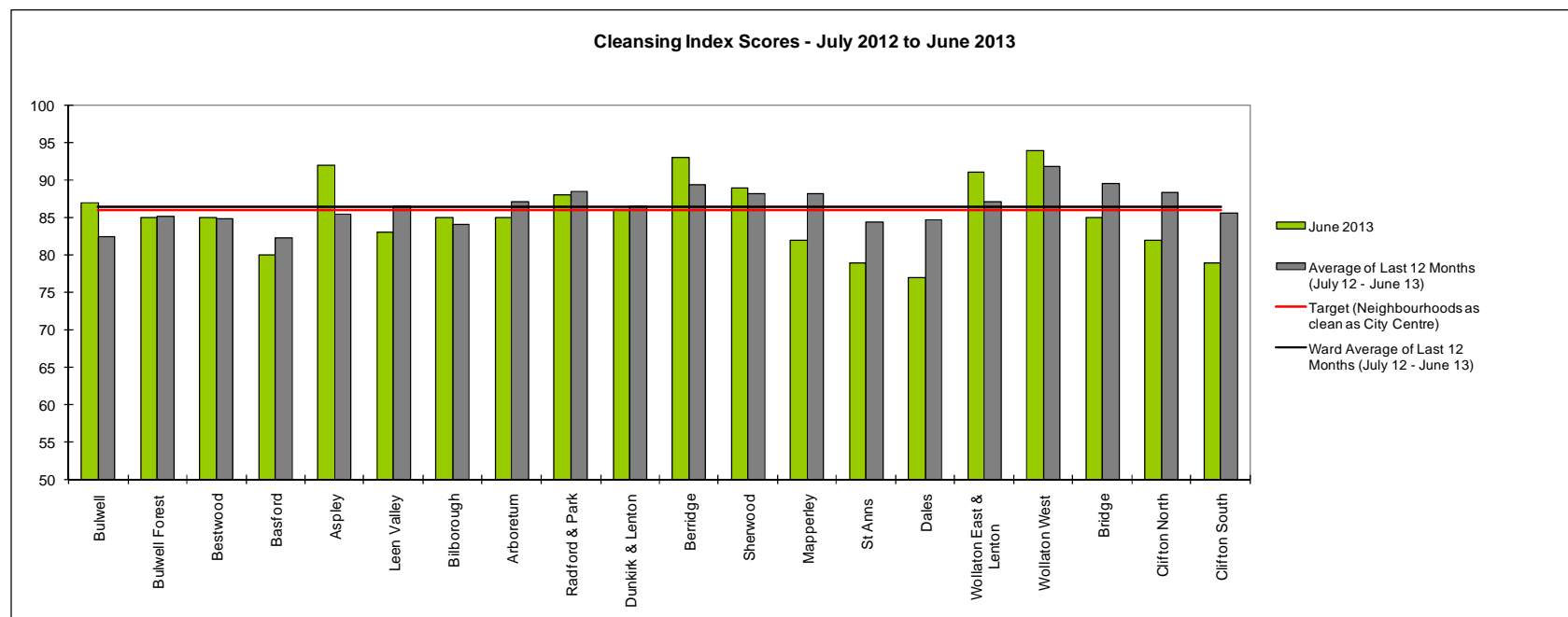
	Highest Rate
	Second Highest Rate
	Third Highest Rate

Table 5: All ASB by Month and Year to Date

	Jul-12	Jul-13	Change	% Change	Prev YTD	YTD	Change	% Change
All ASB Total	66	101	35	53.03%	316	295	-21	-6.65%

Cleanliness Index

This graph shows the position of your ward compared to other Wards



The “neighbourhood as clean as the city centre” benchmark target on cleanliness is to achieve a score of 86% in every ward. The 86% target is shown in red in the above graph.

To calculate the Cleanliness Index (CI) an agreed number of transects are surveyed across an area covering a range of land types. Each site surveyed is awarded a cleanliness grade based on a 7 point scale from A to D where Grade A: – no litter, and Grade D: - heavily littered. The maximum possible score of 100 is achieved when all sites achieve Grade A.

The Code of Practice for Litter and Refuse (COPLAR) requires councils to strive to reach an ‘acceptable’ standard of cleanliness (grade B or better) across the Council area. Grade A is the ultimate goal and is how a site should be immediately after sweeping but is almost impossible to maintain for any length of time. For example, a grade A site is completely free of litter – one cigarette butt takes it down to B+.

To achieve the manifesto commitment of Neighbourhoods as clean as the City Centre a target of 86 is required as that was the CI for the City Centre in May 2011. To give some context if all areas surveyed achieved a grade ‘B’ standard, this would equate to a cleanliness index of 67.

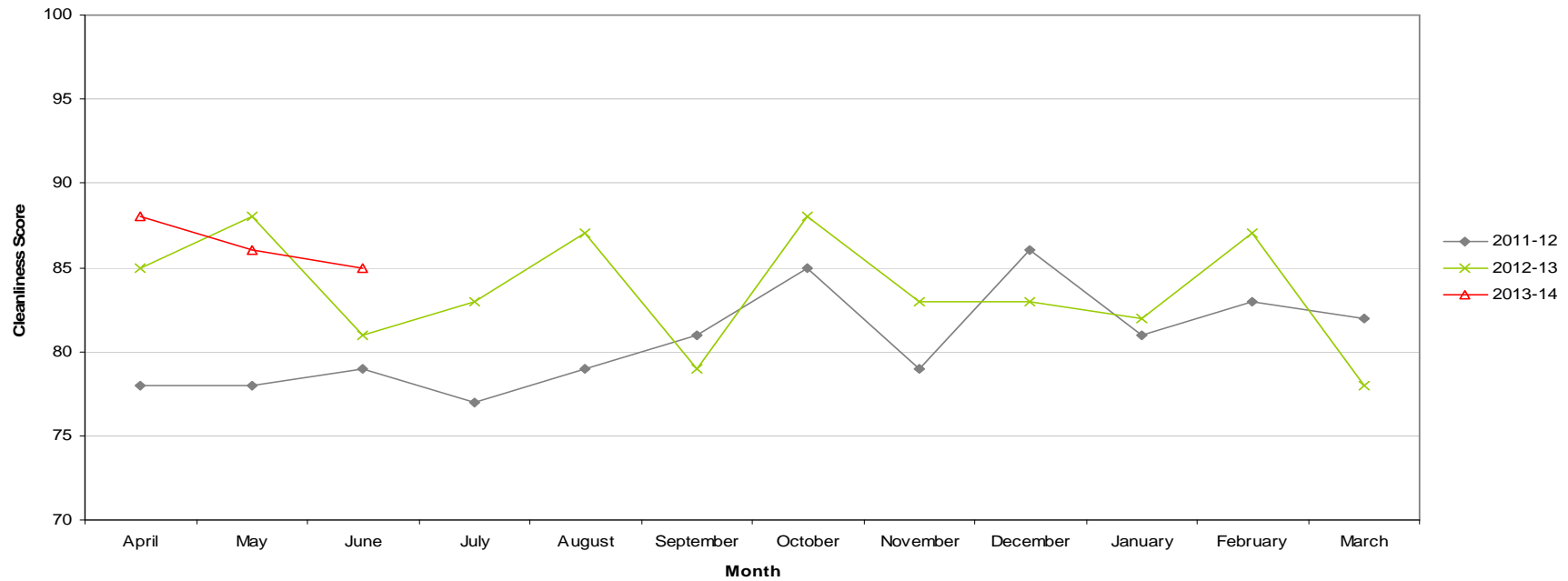
Cleanliness Figures provided by Neil Flaherty – Neighbourhood Services Directorate

Cleanliness Index

Cleanliness Index Score	85
Performance compared to previous year	↗
Performance compared to neighbourhoods target of 86	↘

- All data refers to a comparison with the previous year's month
- It is proposed that performance over time graphs be used for each indicator
- Historic data for comparison is not available for dog fouling

Cleanliness Index - Bilborough

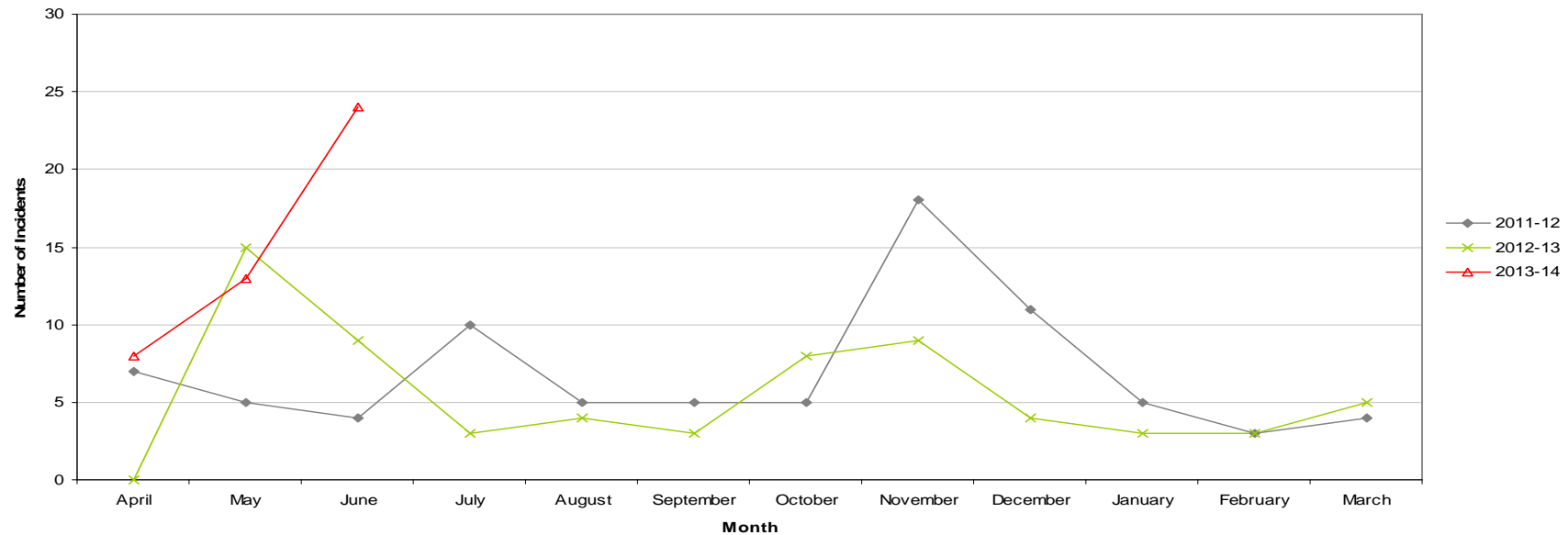


Graffiti Reports

RED	24 incidents	Increase of 15
AMBER		
GREEN		

- All data refers to a comparison with the previous year's month
- It is proposed that performance over time graphs be used for each indicator
- Historic data for comparison is not available for dog fouling

Incidents of Graffiti - Bilborough



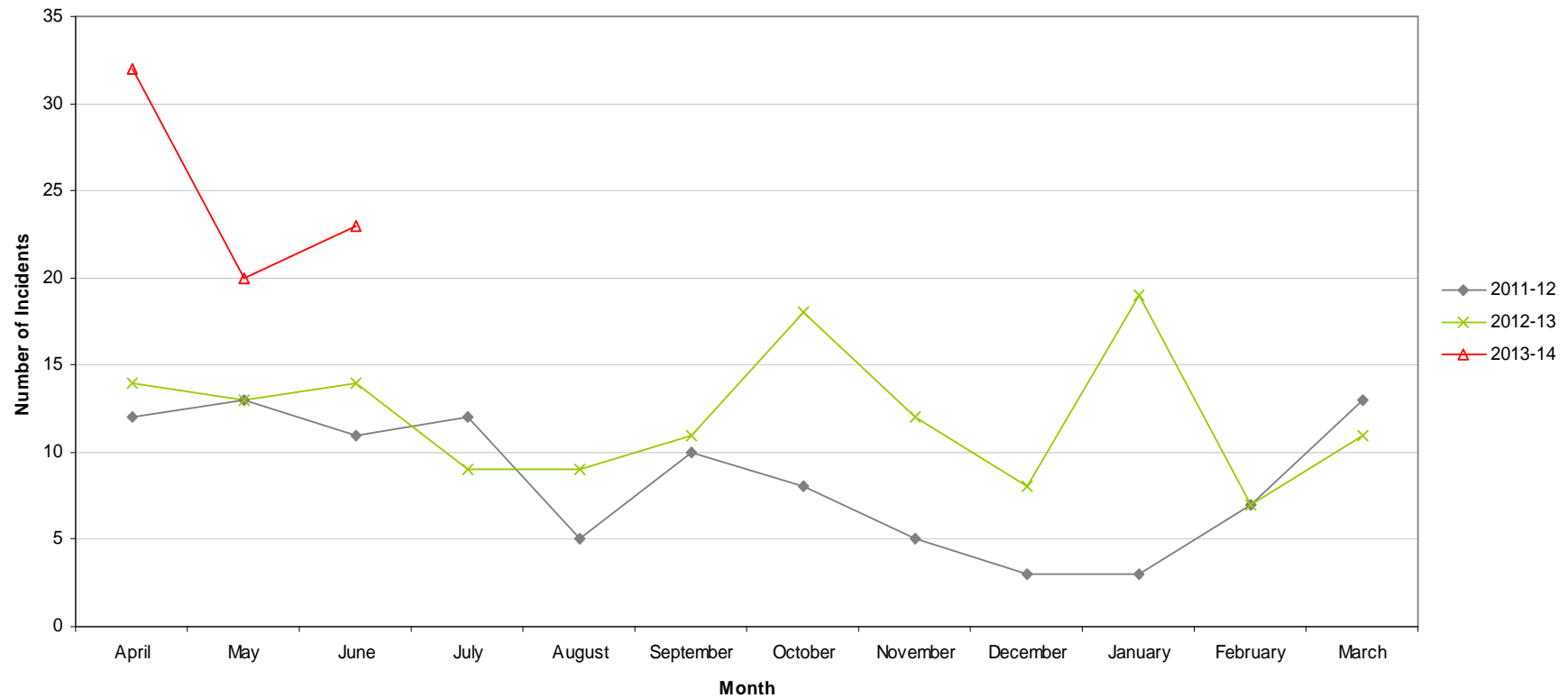
CPOs across the City have been asked to report everything they came across regardless of size. This they did and the level of work increased considerably. As CPOs have no direct input to Confirm they had been asked to send all reports to the ASB line and they then input into Confirm. Inputting is done on a random basis which means time is spent reworking jobs into a manageable order.

Fly Tipping

RED	23 incidents	Increase of 9
AMBER		
GREEN		

- All data refers to a comparison with the previous year's month
- It is proposed that performance over time graphs be used for each indicator
- Historic data for comparison is not available for dog fouling

Incidents of Fly Tipping - Bilborough



Unemployment Rate

Area	Jun-13			Change in last month		Change in last year	
	Number	Rate	City Rank	Number	%	Number	%
Arboretum	803	6.8	8	-35	-4.2	-47	-5.5
Berridge	1,015	7	6	-26	-2.5	-78	-7.1
Dunkirk and Lenton	214	2	19	-15	-6.6	-65	-23.3
Radford and Park	748	4	17	-12	-1.6	-43	-5.4
Sherwood	514	4.8	13	-32	-5.9	-66	-11.4
Wollaton East and Lenton Abbey	136	1.4	20	-14	-9.3	-7	-4.9
Wollaton West	207	2.3	18	-23	-10	-34	-14.1
Aspley	1,153	10.2	1	-51	-4.2	-56	-4.6
Basford	718	6.5	9	-4	-0.6	-3	-0.4
Bestwood	926	8.2	4	-84	-8.3	-85	-8.4
Bilborough	742	7.1	5	-32	-4.1	-59	-7.4
Bulwell	1,048	9.6	2	-28	-2.6	-23	-2.1
Bulwell Forest	421	4.6	14	-22	-5	-43	-9.3
Leen Valley	315	4.5	16	-18	-5.4	-33	-9.5
Bridge	641	6.1	10	-29	-4.3	-106	-14.2
Clifton North	408	4.6	14	-6	-1.4	19	4.9
Clifton South	482	5.5	12	-16	-3.2	-20	-4
Dales	814	7	6	-64	-7.3	-61	-7
Mapperley	635	5.7	11	-57	-8.2	-95	-13
St Ann's	1,205	8.8	3	-54	-4.3	-38	-3.1

This is an edited version of a report produced by: Geoff Oxendale, Information and Research Officer, Nottingham City Council. Claimant count of Job Seekers Allowance (JSA) is used as a proxy measure for unemployment.

Wards are ranked from 1 (highest Rate, per 1000 of population, of JSA claimants) to 20 (lowest Rate).

Housing

Bilborough Ward - Housing



Anti-social behaviour - Aspley (Bilborough Ward)

Indicator	Current Target	2010/11	2011/12	2012/13		
		Value	Value	Value	Status	Trend
% of ASB cases resolved - Aspley	97.6%	94.14%	95.85%	99.42%		
% of ASB cases resolved by first intervention - Aspley	75%	-	-	84.12%		n/a

Empty properties - Bilborough Ward

Indicator	Current Target	2010/11	2011/12	2012/13		
		Value	Value	Value	Status	Trend
Average void re-let time for Bilborough Ward (calendar days)	26	22.9	27.21	30.16		
Number of lettable voids Bilborough Ward	-	30	20	19		
Number of empty properties awaiting decommission in Bilborough Ward	-	2	13	13		

Estate star ratings (from Tenant Service Inspectors).

Indicator	2010/11		2011/12		2012/13		
	Value	Status	Value	Status	Value	Status	Trend
Estate star rating - Southwold	3 Star		3 Star		3 Star		
Estate star rating - Beechdale	3 Star		3 Star		3 Star		
Estate star rating - Bilborough	2 Star		3 Star		3 Star		
Estate star rating - Strelley	3 Star		3 Star		3 Star		

Data prepared by Nottingham City Homes Performance Team

For more information please contact Tricia Quinn, Performance Review Manager on 0115 9157365 or Marcus Parton, Performance Review Officer 0115 915715

Housing

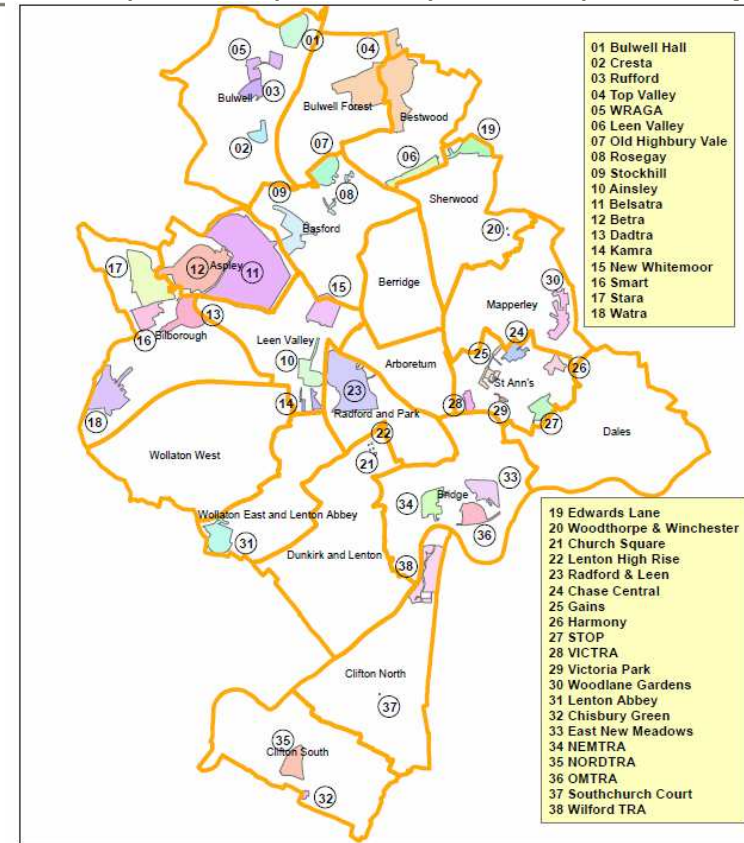
Rent collection - Aspley

Indicator	Current Target	2010/11	2011/12	2012/13		
		Value	Value	Value	Status	Trend
Rent charged that has been collected - Aspley	100.2%	101.5%	101.6%	100.2%	✓	↑

Key:

- ✓ Performance on or exceeding target
- Performance below target
- 📊 Data only performance indicator
- ↑ Performance has improved compared to two years ago
- ↓ Performance has deteriorated compared to two years ago
- ▬ Performance unchanged

Map of Tenants and Residents Associations by Ward



Data prepared by Nottingham City Homes Performance Team

For more information please contact Tricia Quinn, Performance Review Manager on 0115 9157365 or Marcus Parton, Performance Review Officer 0115 915715

Housing

Performance indicator definitions

Performance indicator	Definition
% of ASB cases resolved	This performance indicator monitors the proportion of ASB cases that Nottingham City Homes has successfully resolved. Data for this indicator is not available by ward and is reported by Housing Office.
% of ASB cases resolved by first intervention	This performance indicator monitors how many ASB cases Nottingham City Homes resolved on the first intervention e.g. written warning. Data for this indicator is not available by ward and is reported by Housing Office.
Average void re-let time (calendar days)	This performance indicator monitors how many empty properties Nottingham City Homes has re-let and the length of time it has taken. The void period is the number of calendar days including the day after the old tenancy ends right through to and including the day before the new tenancy starts.
Number of lettable voids	This performance indicator monitors the number of empty properties which are available for re-letting. Lettable empty properties are those which will receive repair work and then be let to a new tenant.
Number of empty properties awaiting decommission	This performance indicator monitors the number of empty properties which will not be re-let and includes those being decommissioned and / or demolished.
Estate star ratings	Nottingham City Homes Tenant Inspectors monitor the condition of estates and rates them according to a zero, one, two and three star standard. The estates are monitored every three months with a selection of streets (determined by tenants) covering all 42 estates.
Rent charged that has been collected	This performance indicator measures the amount of rent collected (including tenant arrears) as a percentage of rent due for the current year. Data for this indicator is not available by ward and is reported by Housing Office.

Data prepared by Nottingham City Homes Performance Team

For more information please contact Tricia Quinn, Performance Review Manager on 0115 9157365 or Marcus Parton, Performance Review Officer 0115 915715

Community Protection

Data has been received from Community Protection and where postcodes have been listed these have been geo-coded and mapped to determine the Ward. All addresses relate to the address of the Perpetrator.

FPNs are not currently available at ward level.

In June 2013 the following orders were issued:

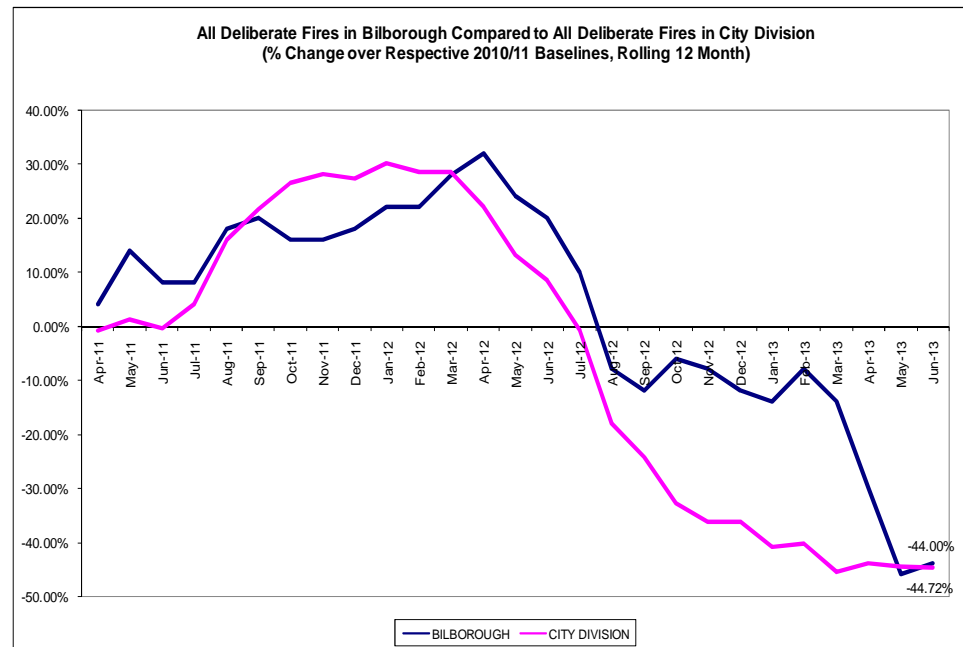
- 3 x Injunctions/Restraining Orders for ASB**
- 1 x Demotion of Tenancy for Drugs**
- 1 x Suspended Possession Order for Drugs**
- 1 x Statutory Notice for Environmental Issues**

For enquiries regarding Community Protection court outcomes please contact the Operational Manager for the locality.

Fire

Table: Volume of Deliberate Primary and Secondary Fires by Ward

Ward	Jun-12	Jun-13	Change	% Change	Previous YTD	YTD	Change	% Change
Arboretum	1	7	6	600.00%	2	11	9	450.00%
Aspley	8	4	-4	-50.00%	15	15	0	0.00%
Basford	4	5	1	25.00%	15	10	-5	-33.33%
Berridge	3	4	1	33.33%	11	12	1	9.09%
Bestwood		4	4		9	18	9	100.00%
Bilborough	1	2	1	100.00%	20	5	-15	-75.00%
Bridge	1	-1	-1	-100.00%	3	5	2	66.67%
Bulwell	8	4	-4	-50.00%	23	18	-5	-21.74%
Bulwell Forest	4		-4	-100.00%	10	4	-6	-60.00%
Clifton North	1		-1	-100.00%	3	4	1	33.33%
Clifton South	1	1	0	0.00%	4	9	5	125.00%
Dales	2	3	1	50.00%	3	8	5	166.67%
Dunkirk and Lenton	1		-1	-100.00%	1	1	0	0.00%
Leen Valley	4	3	-1	-25.00%	11	10	-1	-9.09%
Mapperley	3		-3	-100.00%	6	5	-1	-16.67%
Radford and Park	1	1	0	0.00%	3	2	-1	-33.33%
Sherwood	1	2	1	100.00%	2	2	0	0.00%
St. Ann's		2	2		5	13	8	160.00%
Wollaton East and Lenton Abbey	1	1	0	0.00%	2	3	1	50.00%
Wollaton West	1		-1	-100.00%	1	2	1	100.00%
Total	46	43	-3	-6.52%	149	157	8	5.37%



- The above table shows volume of deliberate (primary and secondary) fires in the 20 wards. In June 2013 there were 2 fires in Bilborough. These were both secondary fires involving grassland and refuse. Year to date deliberate fires in Bilborough are down 75% (15 fires) compared to the corresponding period last year.
- The graph on the right shows a *rolling* 12 month total of deliberate fires in Bilborough against the *fixed* 2010/11 baseline. The performance of the City Division against *its* baseline has also been shown for comparison purposes.

*Note: Where ward boundaries overlap with the City Centre fires that occurred in the City Centre have been **included** in the ward figures.*

Methodology

Data has not been audited or verified and therefore must only be used as a reflection of crime.

Crime data and ASB calls have been extracted from the Police systems and mapped to ascertain which Ward they occurred in.

Where a ward boundary overlaps with the City Centre, crime data and ASB calls relating to the City Centre have been removed.

Where possible the most recent data is used, although for some areas this may be a month further in arrears.

Discussions continue with other agencies regarding what further data can be included.